

NMR data processing software

**Delta**

NMR Software

v5.0

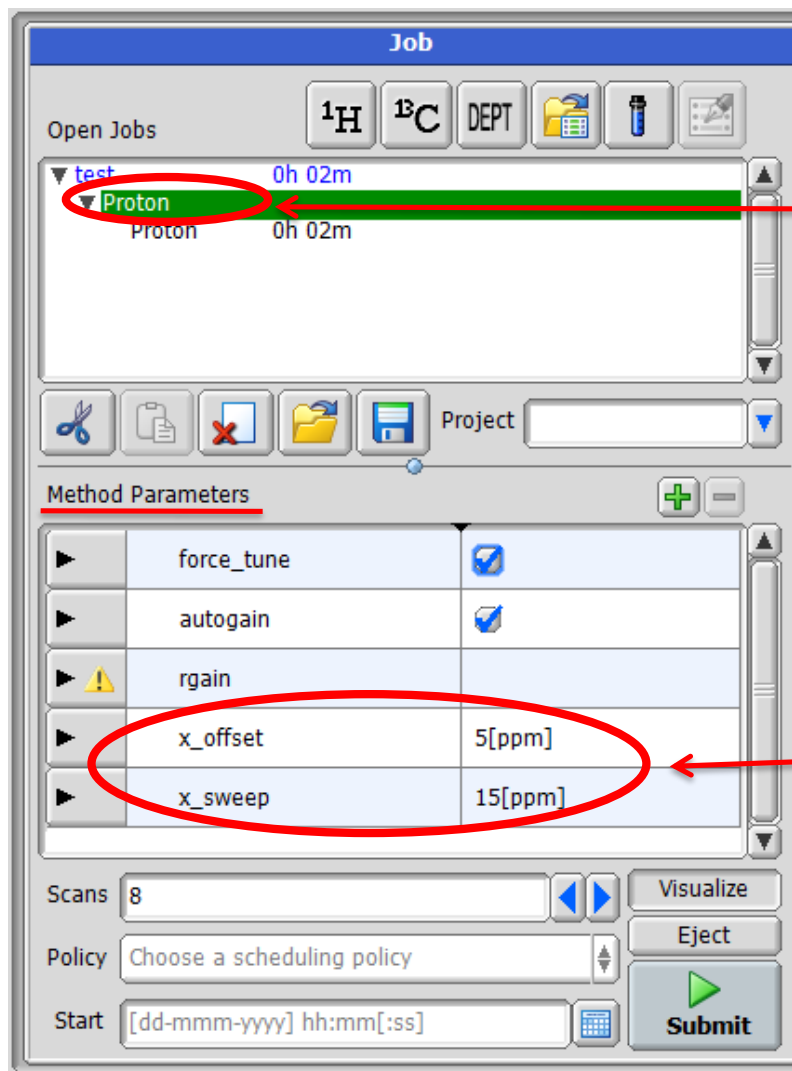


# 实验测定中常见设置说明



# 1. 修改谱宽，谱图中心位置

(1) 情形一：调入  $^1\text{H}$   $^{13}\text{C}$  等实验，方法参数(Method parameters)中可直接修改  
(如下图所示，此处以氢谱为例)




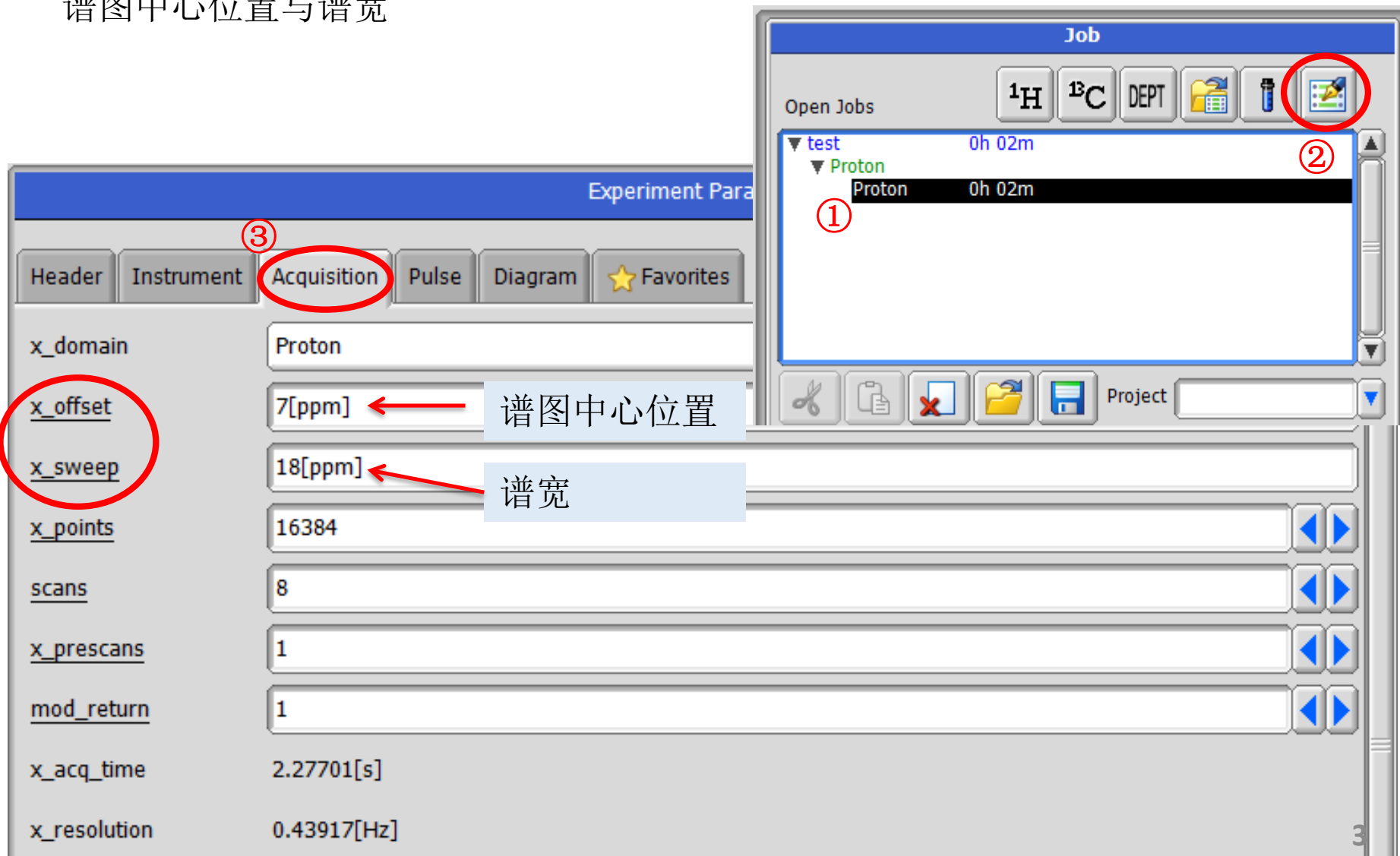
鼠标放在  
Proton方法上

x\_offset为中心位置  
x\_sweep为谱宽

若界面显示与该界面不同，请看下页

## (2) 情形二：上页的界面中没有谱图中心/谱宽修改的选项

①点击下级文件实验proton→②点击编辑按钮→③Acquisition中可修改谱图中心位置与谱宽



Experiment Parameters

Header Instrument **Acquisition** Pulse Diagram Favorites

x\_domain Proton

**x\_offset** 7[ppm] ← 谱图中心位置

**x\_sweep** 18[ppm] ← 谱宽

x\_points 16384

scans 8


x\_prescans 1

mod\_return 1

x\_acq\_time 2.27701[s]

x\_resolution 0.43917[Hz]

Job

Open Jobs  $^1\text{H}$   $^{13}\text{C}$  DEPT 

test 0h 02m

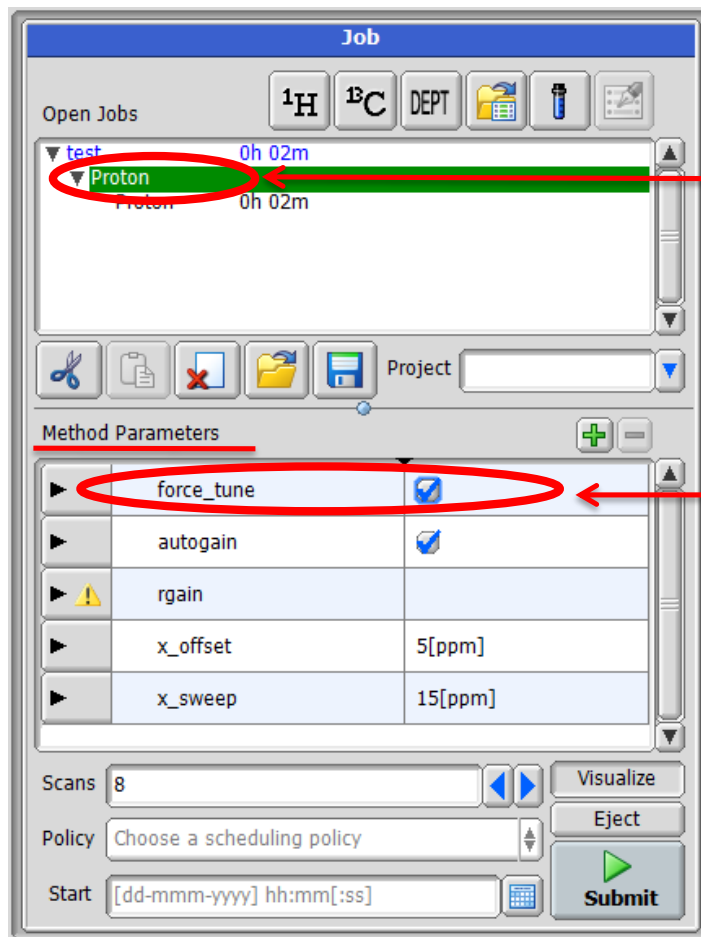
Proton 0h 02m

Proton 0h 02m

Project

## 2. 调谐 当实验中需要调谐时，提交实验前需勾选强制调谐(force\_tune)选项

- (1) 先查看方法参数(Method parameters)中是否可直接选择  
(如下图所示)



鼠标放在  
Proton方法上

勾选即为调谐

若此处无force\_tune选项，请参考下页说明

(2) 打开实验方法修改调谐参数:

①点击下级文件实验proton→②点击编辑按钮→③Header中可勾选调谐选项

The image displays two windows from a Bruker software interface. The main window, titled "Experiment Parameters", has a tabbed interface with "Header" selected. The "Header" tab contains several parameters: "storage\_filename" (test\_Proton), "filename" (proton), "storage\_comment" (single\_pulse), "comment" (single\_pulse), "auto\_gain" (checked), "filter\_limit" (16), "force\_dual\_mode" (unchecked), and "force\_tune" (checked). The "force\_tune" checkbox is circled in red. A smaller window titled "Job" is overlaid on the top right, showing a tree view of "test" (0h 02m) containing "Proton" (0h 02m). The "Proton" entry is circled in red with a "1" next to it. In the "Job" window's toolbar, an edit button (a document with a pencil) is circled in red with a "2" next to it. In the "Experiment Parameters" window, the "Header" tab is circled in red with a "3" next to it.

### 3. 设置样品旋转与匀场状态

①在样品命名界面，点开编号左边的小三角→修改是否匀场、旋转

The screenshot shows the 'Attributes' table for a sample named 'test'. The table has the following columns: Attribute Name, Value, and a checkbox. The 'gradient shim' attribute is unchecked, and the 'spin\_state' attribute is set to 'SPIN OFF'. Red arrows point to these settings with Chinese annotations: '不勾选即为不匀场' and 'Spin off为不旋转'.

Attribute Name	Value	Checkbox
gradient shim		<input type="checkbox"/>
last shimmed	4-DEC-2020 11:24:09	
load shims	System	
lock_state	AUTOLOCK	
preparation		<input checked="" type="checkbox"/>
spin_set	15[Hz]	
spin_state	SPIN OFF	<input checked="" type="checkbox"/>
temp_set	25[dC]	
temp_state	TEMP OFF	

**注：此设定需在提交样品之前完成方可生效！**