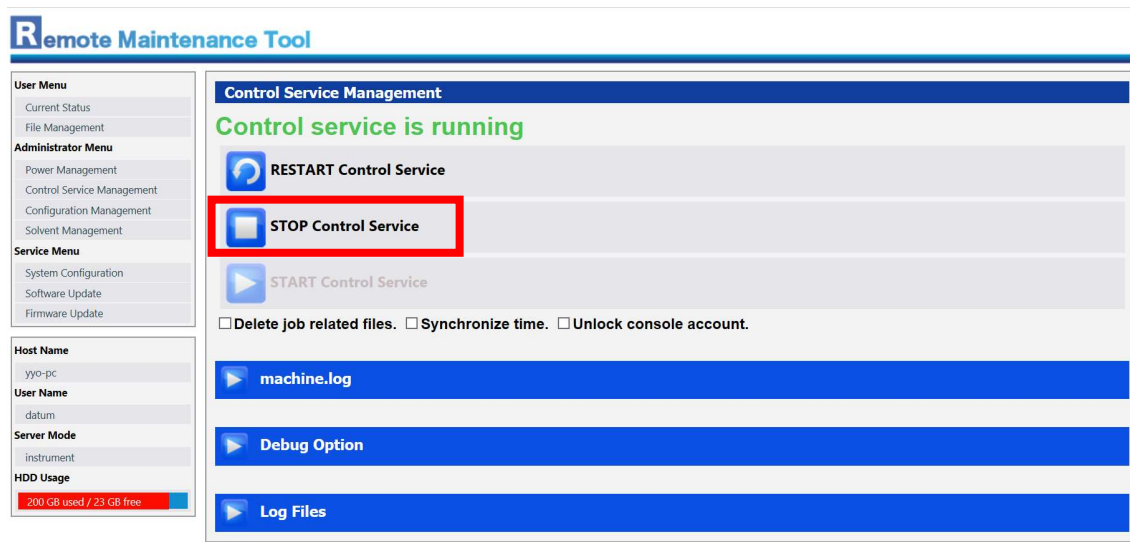
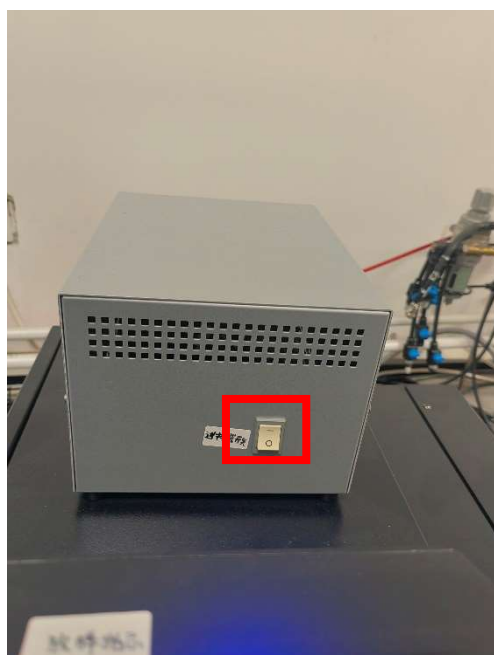


JeakBean 自动进样器手动进样设定

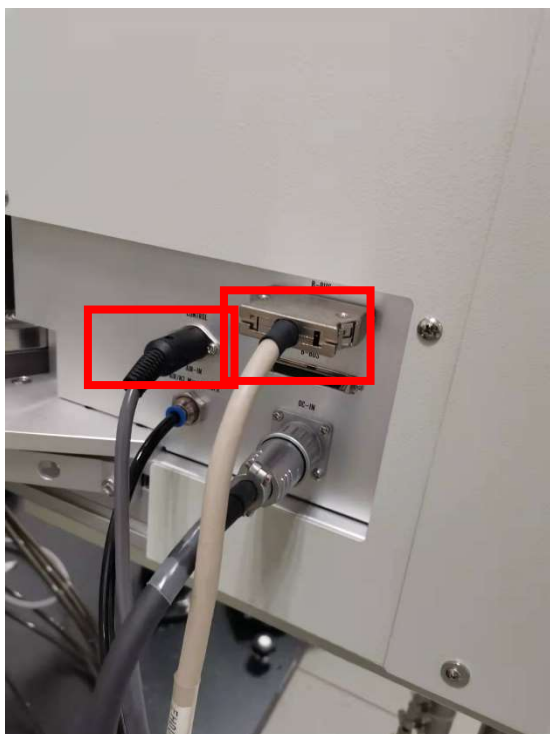
1. Stop control service



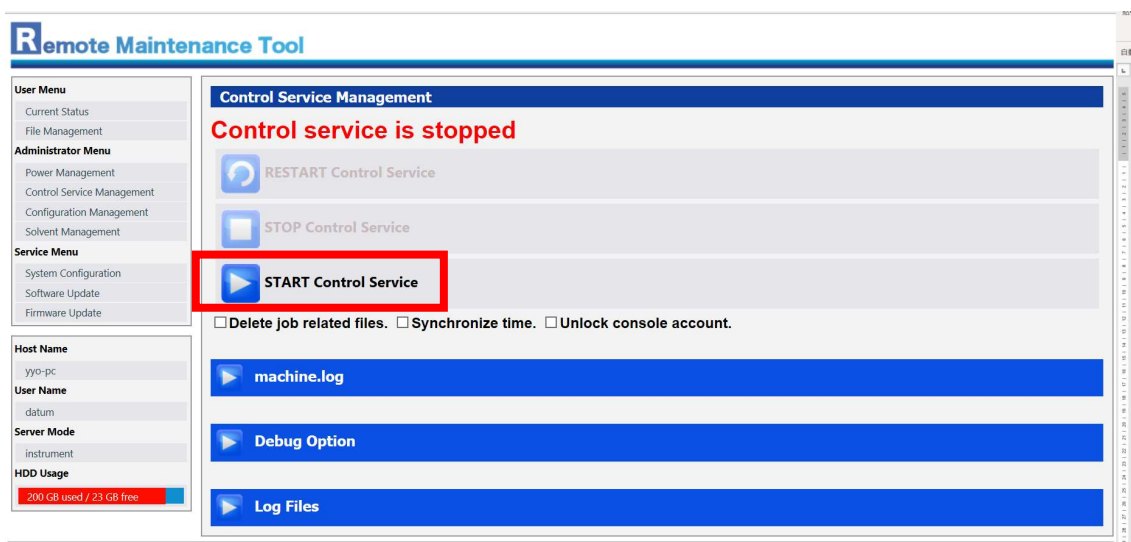
2. 关闭自动进样器电源



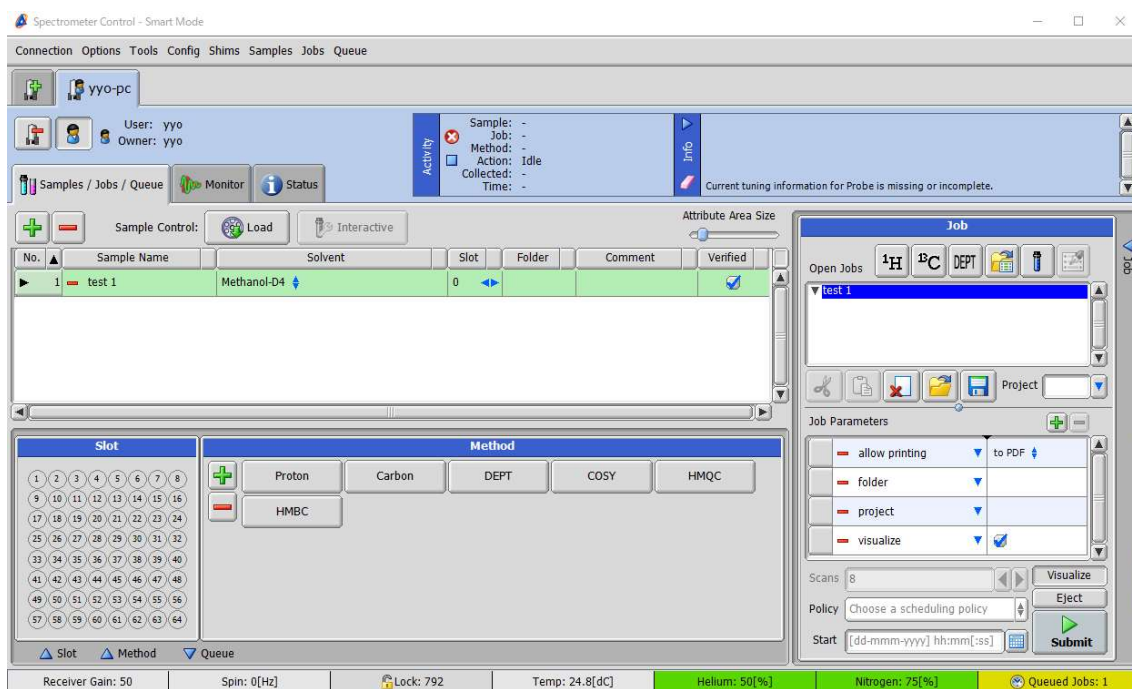
3. 拔掉自动进样器接线 (B-Bus 线和 CONTROL 线)



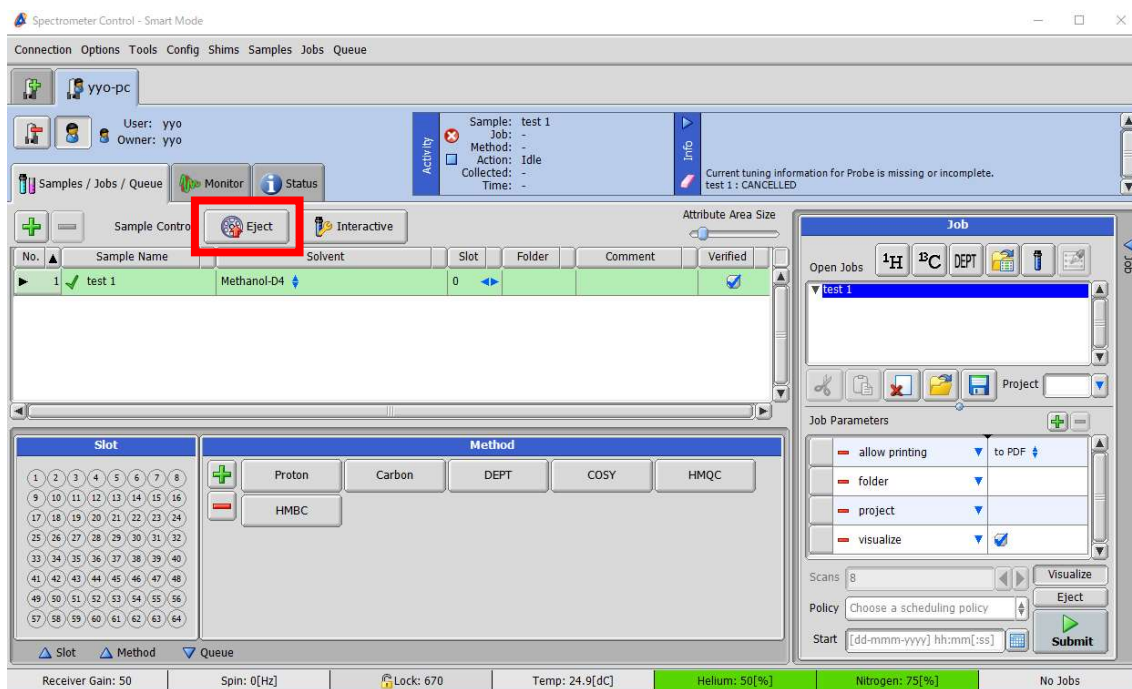
4. Start control service



5. 把样品直接放在磁体上 (样品会一上一下漂浮状态), 创建新样品, 不用改 Slot, 和平时一样选择脉冲, 提交测定就可以。



6. 测完结束后点 Eject 弹出样品



恢复自动进样器功能

1. Stop control service
 2. 恢复自动进样器接线 (B-Bus 线和 CONTROL 线)
 3. 打开自动进样器电源
 4. Start Control Service
- 具体操作画面参考上边